



"HENRI COANDA"  
AIR FORCE ACADEMY  
ROMANIA



"GENERAL M.R. STEFANIK"  
ARMED FORCES ACADEMY  
SLOVAK REPUBLIC

INTERNATIONAL CONFERENCE of SCIENTIFIC PAPER  
AFASES 2015  
Brasov, 28-30 May 2015

## THE BEHAVIOR OF AN $Al_2O_3$ COATING DEPOSITED BY PLASMA ELECTROLYTIC OXIDATION ON ALUMINUM ALLOYS AT HIGH TEMPERATURE REGIME

Geanina Laura Pintilei\*, Marioara Abrudeanu\*, Corneliu Munteanu\*\*, Ionuț Vasile Crîșmaru\*\*, Mihaela Vladu\* and Iustin Popa\*

\*Faculty of Mechanics and Technology, University of Pitesti, Romania, \*\*Faculty of Mechanical Engineering "Gheorghe Asachi" Technical University, Iasi, Romania

**Abstract:** Aluminum alloy present numerous advantages like high specific strength and diversity which recommend them to a high number of applications from different fields. In extreme environments the protection of aluminum alloys is difficult and requires a high number of requirements like high temperature resistance, thermal fatigue resistance and corrosion fatigue resistance. To obtain these characteristics, coatings can be applied to the surfaces so they can enhance the mechanical and chemical properties of the parts. This paper analyses an  $Al_2O_3$  coating deposited by plasma electrolytic oxidation on an AA2024 aluminum alloy. The sample was subjected to a temperature of 500 °C and after that slowly cooled to room temperature. The sample was analyzed by electron microscopy and X-ray diffraction to determine the morphological and phase changes that occurred during the temperature exposure. To determine the stress level in the parts due to thermal expansion a finite element analysis was performed in the same conditions as the tests.

**Keywords:**  $Al_2O_3$ , PEO, AA2024

### 1. INTRODUCTION

The purpose of this paper is to analyze the behavior of an AA2024 sample with an  $Al_2O_3$  coating deposited by plasma electrolytic oxidation. The sample was subjected to high temperature. After the test the sample was analyzed by electron microscopy and X ray diffraction and also finite element analyses were done to determine the stress level that appears in the sample due to the different thermal expansion coefficients of the materials.

Yerokhin A. L. 1998, describes the fact that plasma electrolytic oxidation, also called micro arc oxidation represents a relatively new

technique of surface modification which have a greater interest for achieving some ceramic oxide coating on Al, Ti and Mg alloys. [1-3]

The layer obtained by plasma electrolytic oxidation can enhance wear and corrosion properties as well as conferring other functional properties such as antifriction properties, thermal protection, optical and dielectric properties. Another used of plasma electrolytic oxidation is that of bond coating for other coating methods. [4]

Plasma electrolytic oxidation method is based on conventional anodic oxidation of metals with low density and their alloys in liquid electrolyte solution. This method works over voltage discharge which leads to micro

plasma discharge. Plasma electrolytic oxidation method allows the formation of oxides coatings made of substrate material as well as more complex oxides containing elements present in the electrolyte. [5]

## 2. MATERIALS, METHODS AND INSTRUMENTATION

The deposition of the coating was done by plasma electrolytic oxidation spraying. After deposition, the sample was subjected to a temperature of 500°C for a period of two hours. The sample was cooled slowly in atmospheric air at normal temperature.

Electron microscopy and X ray diffraction were used to analyze the effects of the high temperature exposure on the sample. Before the analyses, the sample was cut, polishes and cleaned in ultrasonic bath.

In table 1 the parameters used for the electrolitic plasma oxidation are presented. Electrolyte solution used in deposition composed of: sodium metasilicate (Na<sub>2</sub>SiO<sub>3</sub>), sodium hydroxide (NaOH) and distilled water.

Table 1: Parameters of deposition

Technological parameters	Al <sub>2</sub> O <sub>3</sub>
Time (min)	2
Tension (V)	350
Intensity (A)	20

A finite element analysis was done to determine the mechanical stress that appears in the sample due to the thermal expansion of the materials. The mesh used in the finite element analyses is showed in Fig 1. The mesh consisted of 50225 nodes and 25892 elements.

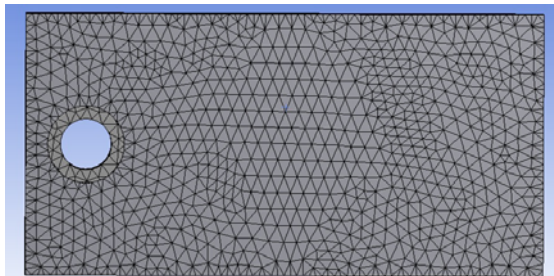


Fig. 1. The mesh used in the finite element analyses

## 3. RESULTS OF THE THERMAL EXPOSURE TESTS

In Fig. 2 a-b are presented images of the sample with an Al<sub>2</sub>O<sub>3</sub> coating before and after the exposures to high temperature.

In Fig. 2 – a in cross section the microstructure of the layer obtained by plasma electrolytic oxidation after deposition can be observed. The layer obtained presents pores with different dimension and a very good compactness. Fig. 2 – b presents a SEM image in cross section of the layer obtained by plasma electrolytic oxidation after thermal exposure at 500°C for two hours. In this case as well we can observe a compactness of the layer deposited. On the SEM image in cross section we can observe pores with different dimensions.

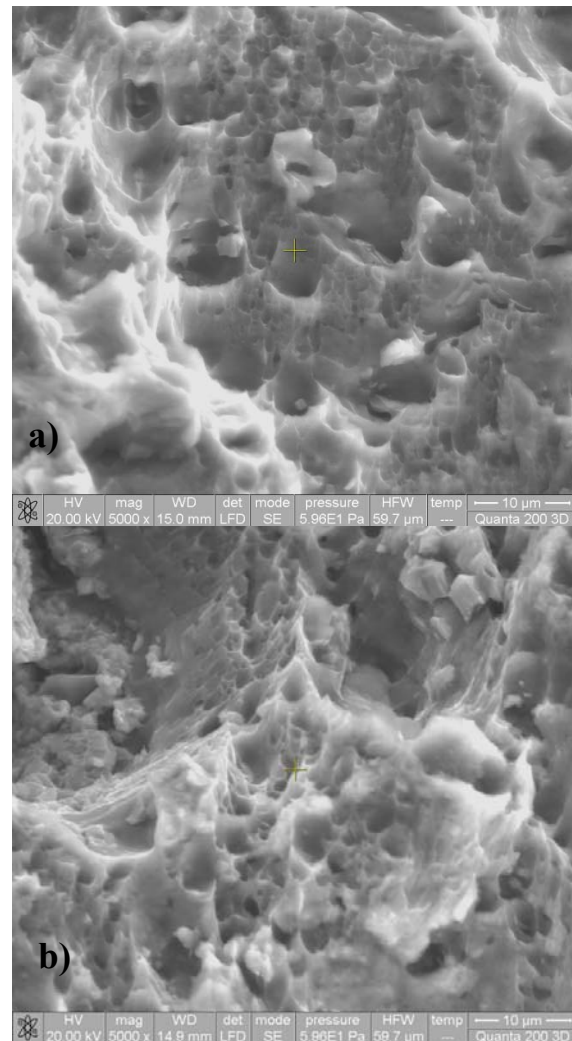


Fig. 2. SEM images at the magnification of 5000x of the Al<sub>2</sub>O<sub>3</sub> coating: (a) before test, (b) after test



"HENRI COANDA"  
AIR FORCE ACADEMY  
ROMANIA



"GENERAL M.R. STEFANIK"  
ARMED FORCES ACADEMY  
SLOVAK REPUBLIC

INTERNATIONAL CONFERENCE of SCIENTIFIC PAPER  
AFASES 2015  
Brasov, 28-30 May 2015

For the determination of the constituent phases of the layer obtained by plasma electrolytic oxidation we used X-ray diffraction method (Fig. 3).

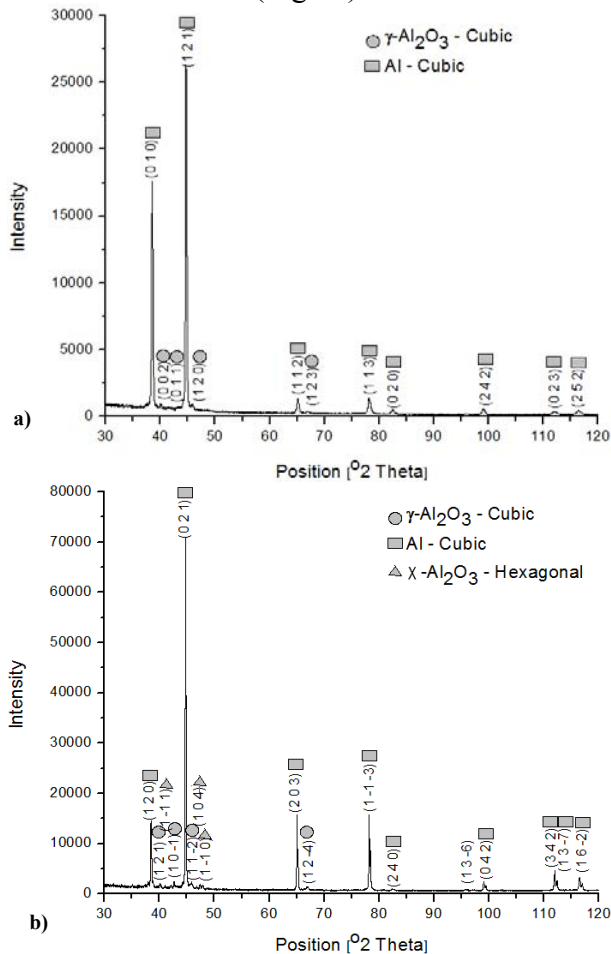


Fig. 3. XRD analyses of the  $\text{Al}_2\text{O}_3$  coating: (a) after deposition, (b) after test

After plasma electrolytic oxidation deposition we can observe in the X-ray diffraction that the diffraction is made of one single phase namely is  $\gamma\text{-Al}_2\text{O}_3$ . The intensity peaks which determine Al phase on the surface is due to X-ray penetration through the coating, due to the pores obtained in coating after deposition. This Al phase is identified from the base material.

After thermal exposure at  $500^\circ\text{C}$  the Al phase which appears on the diffraction due to X - ray coating penetration remains unchanged, crystallizing in cubic system. In the case of the  $\gamma\text{-Al}_2\text{O}_3$  phase, as well, in it unchanged the cubic system. Due to oxidation after thermal exposure appeared on the surface a new phase  $\chi\text{-Al}_2\text{O}_3$  which crystallized in hexagonal system. The peaks increased in intensity due to the coating being sintered.

Maximum equivalent stress appears on the clamping whole area. Its value is 252 MPa. On the surface of the sample the maximum equivalent stress is 200 MPa. In the cross section of the sample we can see that the base material is less solicited mechanically, and the tension distribution on the surface is extended in all layer body (Fig. 4).

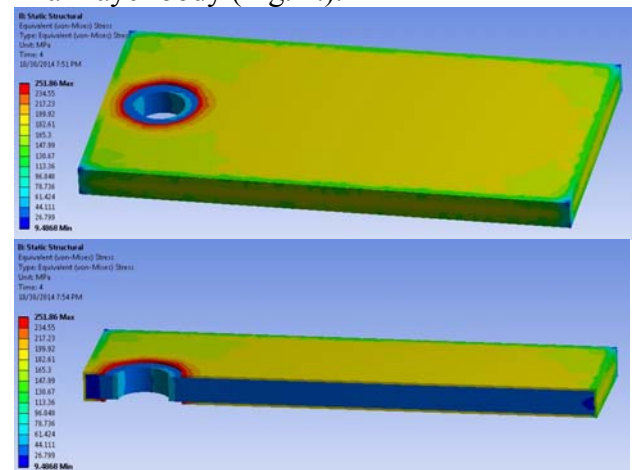


Fig. 4. Tensile stress distribution in the sample with an  $\text{Al}_2\text{O}_3$  coating

The elastic strain distribution is presented in Fig. 5. The maximum value of the elastic strain on the clamping hole is 0.78%, and on the rest of the surface layer is 0.73%.

In Fig. 6 the plastic deformations of the sample is presented. The value of the plastic deformation is very small in the coating layer, except for clamping hole area where the value is 0,3%.

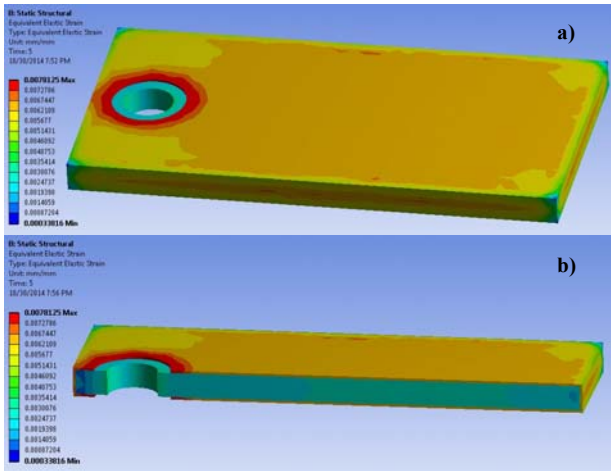


Fig. 5. Elastic strain distribution in the sample with an Al<sub>2</sub>O<sub>3</sub> coating

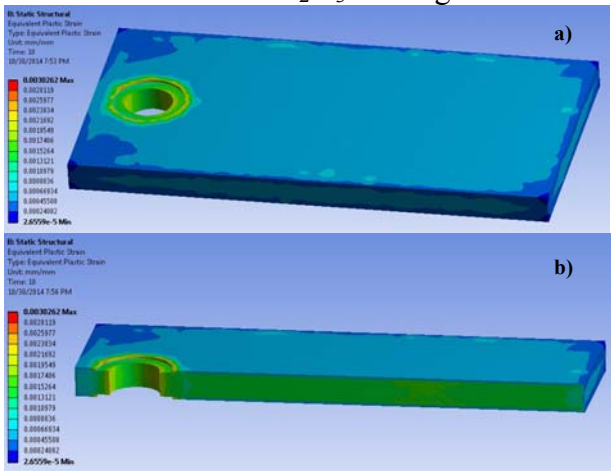


Fig. 6. Plastic deformations in the sample with an Al<sub>2</sub>O<sub>3</sub> coating

Fig. 7 presents the total deformation which appears in the sample. The maximum value of the total deformation is 0.62 mm.

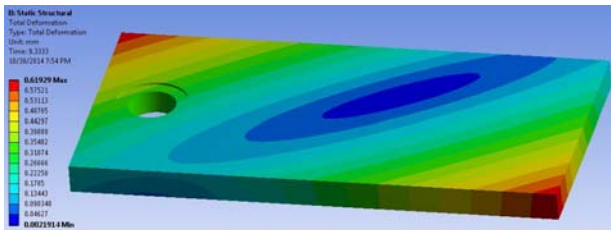


Fig. 7. Total deformation in the sample with an Al<sub>2</sub>O<sub>3</sub> coating

## 5. CONCLUSIONS & ACKNOWLEDGMENT

The exposure of the sample with a coating of Al<sub>2</sub>O<sub>3</sub> obtained by plasma electrolytic

oxidation at a temperature of 500°C produced a higher level of compactness of the deposited coating. The volume of the pores and the thickness of the splats interfaces decreased.

This work of Pintilei Geanina Laura was supported by the strategic grant POSDRU/159/1.5/S/138963 - PERFORM, co-financed by the European Social Fund – Investing in People, within the Sectoral Operational Programme Human Resources Development 2007-2013.

## REFERENCES

1. Per-Lennart Larsson, On representative stress correlation of global scratch quantities at scratch testing of elastoplastic materials, *Materials & Design*, In Press, Accepted Manuscript, Available online 13 February 2013
2. Dipankar Ghosh, at. all, Scratch-induced microplasticity and microcracking in zirconium diboride–silicon carbide composite, *Acta Materialia*, Volume 56, Issue 13, August 2008, Pages 3011-3022
3. Aleksandar Vencl, at. all, Evaluation of adhesion/cohesion bond strength of the thick plasma spray coatings by scratch testing on coatings cross-sections, *Tribology International*, Volume 44, Issue 11, October 2011, Pages 1281-1288
4. Y Xie and H.M Hawthorne, On the possibility of evaluating the resistance of materials to wear by ploughing using a scratch method, *Wear*, Volume 240, Issues 1–2, May 2000, Pages 65-71
5. N. Schwarzer, Q.-H. Duong, at. all, Optimization of the Scratch Test for specific coating designs, *Surface and Coatings Technology*, Volume 206, Issue 6, 15 December 2011, Pages 1327-13354. Walter, N. Name of the fourth example paper. *Source*. [online]. Available: <http://www.domain.extension> (December, 2009).